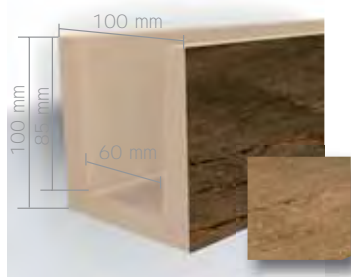




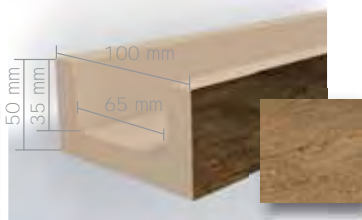
Beams
Poutres
Balken
Travi
Vigas
Балок
BELEK

Architecture & Design

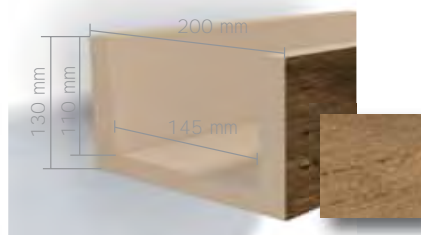
nmc



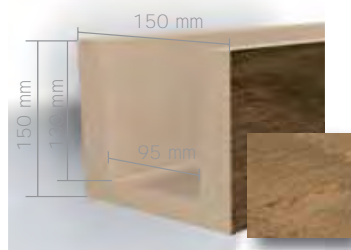
Beam 10-10 DARK-BROWN
Beam 10-10 LIGHT-BROWN
Length 2m, 3m



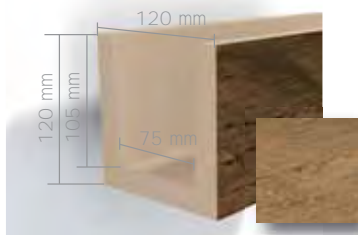
Beam 05-10 DARK-BROWN
Beam 05-10 LIGHT-BROWN
Length 2m, 3m, 4m



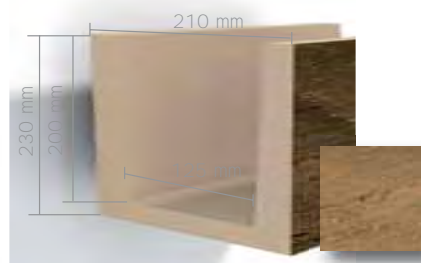
Beam 13-20 DARK-BROWN
Beam 13-20 LIGHT-BROWN
Length 3m, 4m



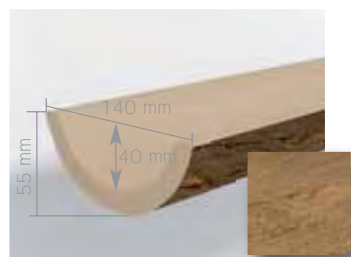
Beam 15-15 DARK-BROWN
Beam 15-15 LIGHT-BROWN
Length 2m, 3m, 4m



Beam 12-12 DARK-BROWN
Beam 12-12 LIGHT-BROWN
Length 2m, 3m, 4m



Beam 23-21 DARK-BROWN
Beam 23-21 LIGHT-BROWN
Length 3m, 4m



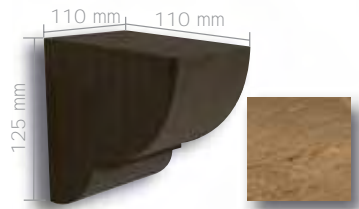
Beam 5-14 DARK-BROWN
Beam 5-14 LIGHT-BROWN
Length 3m



Sheet 3-28 DARK-BROWN
Sheet 3-28 LIGHT-BROWN
Length 3m



Large Corbel DARK-BROWN
Large Corbel LIGHT-BROWN



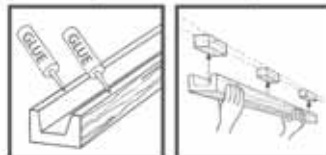
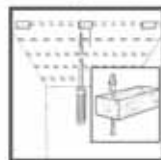
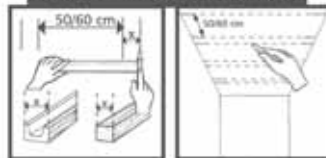
Small Corbel DARK-BROWN
Small Corbel LIGHT-BROWN

ACCESSORIES

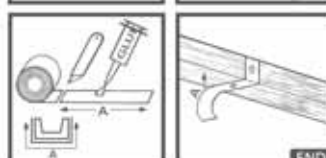
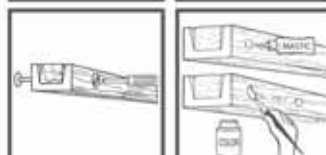
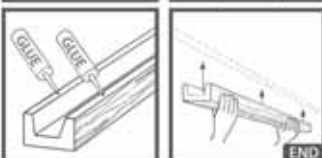




13x20 - 15x15 - 23x21



5x10 - 10x10 - 12x12 - 5,5x14



DWCD005 - 07/2008 © NMC sa Gert-Noel-Straße · B-4731 Eynatten



www.nmc.eu

